

TAGDev Mid Term Review: Summary Report - Infographics



ABOUT TAGDEV

Transforming African Agricultural Universities to meaningfully contribute to Africa's growth and development (TAGDev), one of four flagship programmes of the Regional Universities Forum for Capacity Building in Agriculture (RUFORUM). TAGDev, supported by Mastercard Foundation aims to transform African agricultural education through projects and activities including Community Action Research Programme plus (CARP+), RUFORUM Enterprise Challenge Programme (RECAP), Technical Skills Development Programme (TESDEP), scholarships MCF@RUFORUM, Nurturing Grants (NG), Field Attachment Programme Awards (FAPA), African Universities Leadership and Management Training Programme (AFRI-Lead), and Policy, Networking, Advocacy and Partnership.



These projects, operating in 15 African agricultural universities in nine countries connect local farming communities, entrepreneurs and agri-businesses, Technical and Vocational Education Training (TVET) institutions, with their students. Deserving but Economically challenged individuals carefully selected are provided with scholarships to support their entry into higher education. They receive model training and preparation which prepares them to flourish in the field through innovations. The goal of the programme is the transformation of Africa's agricultural performance in the 21st century by innovations spurred by these better trained, motivated and skilled youth.

Mid-Term Review

The mid-term review was conducted by GIC Ltd as an independent, external evaluation.

TAGDev Programme Objectives

- Δ Pilot new model of agricultural education
- Δ Strengthen entrepreneurship
- Δ Scale out model
- Δ Increase collaboration and mutual learning for rural transformation

Mid-term Review Purpose

Findings to support program learning, quality improvement, accountability, and sustainability

Scope of Review

- Δ Focused data from Gulu and Egerton universities
- Δ Broader data from 15 universities across 9 countries
- Δ CARP, RECAP, TESDEP, MCF@RUFORUM

TAGDEV THEORY OF CHANGE

System-level enabling conditions

- Institutional autonomy and academic freedom
- Accountability mechanisms
- Student support and financial aid
- Funding for teaching and research
- Leadership, vision, and plan

Institution-level enabling conditions

- Internal quality assurance and institutional research
- Resources and incentives for teaching, research, and student aid
- Equity promotion and student services

Sequence of causal links within university

- Appropriate qualifications, experience, and motivation of academic staff through academic recruitment and staff development
- Effective enrollment system and procedures for selection of incoming students
- Favorable learning environment and research infrastructure
- Linkages with industry and community
- Stakeholder inputs

Outcome

Engaged transformative universities, increased number and quality of graduates, increased and better-quality research

Intermediary Results Outputs & Outcomes

High quality and relevant programmes/courses; engaging pedagogical practices and more time spent on active learning activities
Dynamic collaboration, proactive multi- and interdisciplinary learning and translational research and outreach processes.



TAGDEV PROJECTS



CARP+

Community Action Research Programmes Plus projects are currently in existence in Gulu and Egerton universities and also in six other countries including Ghana, Benin, Sudan, Botswana, Namibia and South Africa.



TESDEP

RUFORUM Technical Skills Development Programme although currently being implemented in four TVET institutions in Kenya and Uganda, the MTR concentrated on Baraka Agricultural College in Kenya, and Bobi Polytechnique in Uganda.



MCF@RUFORUM

Mastercard Foundation at RUFORUM Scholarship programme is offered to students in Gulu and Egerton universities in Uganda and Kenya respectively with recipients also coming from other parts of the continent.



RECAP

RUFORUM Entrepreneurship Challenge Programme is being implemented at the Egerton and Gulu universities along with twelve other universities in the following countries - DR Congo, Burundi, South Sudan, Ethiopia and Eswatini.

TAGDEV TIMELINE

2016

Project inception in Gulu & Egerton University



2018

Continued growth in cohorts for MCF Scholarships and CARP+



2020

TAGDev Mid-term Review



2017

- Δ 1st MCF Scholarship Cohort
- Δ RECAP Bishop Stuart University & Bindura University, Zimbabwe
- Δ 1st cohort RECAPS

2019

- Δ TESDEP activities started
- Δ Continued growth in cohorts for RECAPS and MCF Scholarships

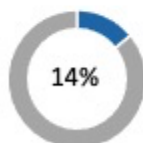
PROGRESS OF ACTIVITIES



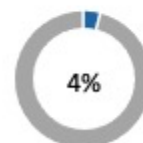
Ongoing activities



Completed as scheduled



Activities delayed



Brought forward

METHODOLOGY

The TAGDev Mid-Term Review used a developmental evaluation perspective with:



Utilization-Focused Evaluation

The evaluation planning and implementation is conducted so that the findings and process of the evaluation can be useful for decision-making and improvement.



Collaborative and Empowerment Approach

An approach that prioritizes stakeholder involvement. Stakeholders gain evaluation skills during the process of working with the evaluators.



Outcome Mapping/Outcome Harvesting

A set of tools and framework that collects data on changes witnessed by program stakeholders. Unlike other forms of evaluation, it can capture both intended and unintended outcomes.

The mid-term review employed a mixed methods approach that combined quantitative and qualitative tools to deeply understand the context and progress of TAGDev, with a particular focus on the two early adopter universities of Gulu and Egerton where all four of TAGDev projects are currently implemented



Survey Respondents

Surveys sent to targeted groups with general and tailored questions



Interviews

Questions tailored to address each stakeholder group



Focus Group Discussants

In-person and virtual focus groups in Kenya, Uganda, etc



Outcome Mapping/ Harvesting

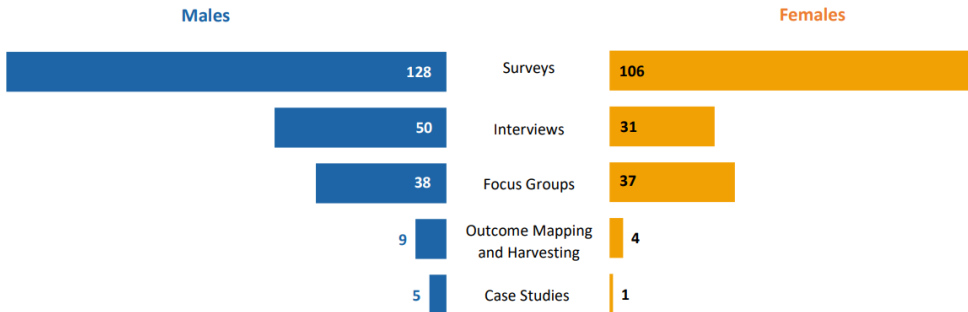
Collected evidence of change and the role of TAGDev in that change



Case Studies

In-depth stories captured

GENDER DISTRIBUTION OF MID-TERM REVIEW PARTICIPANTS



TAGDEV MID-TERM REVIEW FINDINGS



Programme Design. The TAGDev Theory of Change is appropriately nested within RUFORUM's 2030 theory of change. However, it will need to be reviewed and refined.



Efficiency. TAGDev's use of human, technical, financial, and material resources were found to be adequate and satisfactory.



Relevance. Partners unanimously agreed that TAGDev is contributing to their strategic priorities.



Partnerships and Coordination. TAGDev has been more successful in creating new partnerships than in fostering collaboration among the partners.



Coherence. There was consensus across all the respondents that the TAGDev programme is aligned with and contributing to many national and continental policies and priorities.



Progress Towards Impact. At mid-term, TAGDev may not be expected to have achieved outcome level changes, but a movement towards ultimate outcomes is discernible.

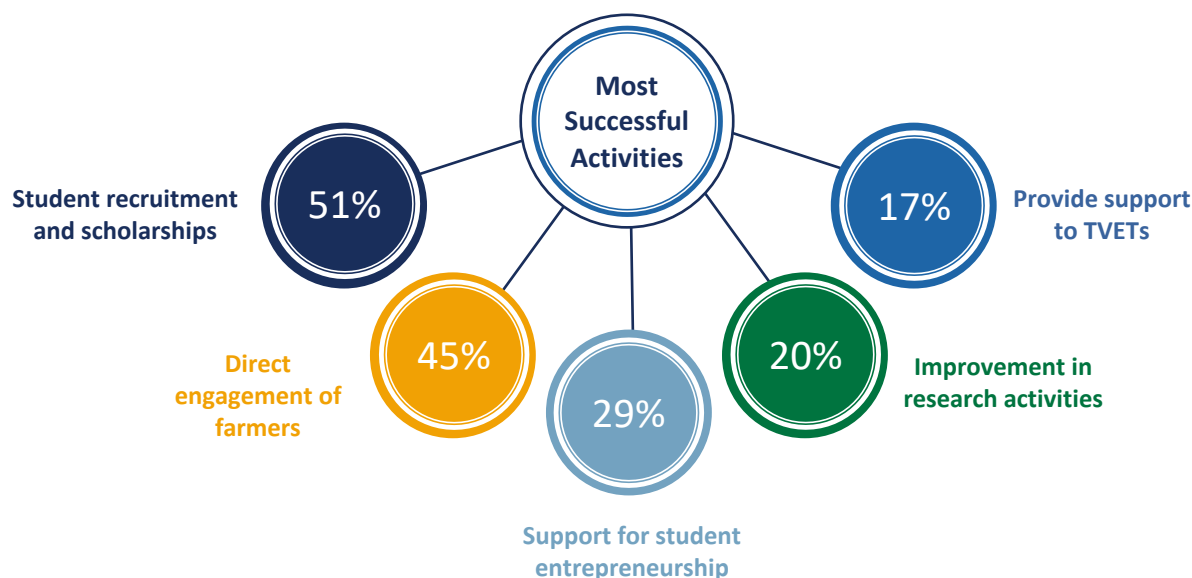


Effectiveness. CARP+ and RECAP were widely recognized and judged successful due to their guidance of MCF scholars to select courses and pairing them with senior researchers / lecturers on specific research projects.



Sustainability. There is optimism about the sustainability of TAGDev instigated reforms. However, there are risks with uncertain funding after the grant ends. Also, there are opportunities to address environmental sustainability.

MOST SUCCESSFULLY IMPLEMENTED PROGRAMME ACTIVITIES



RESOUNDING SUCCESS OF SCHOLARSHIP PROGRAMME

TARGETING BRIGHTEST STUDENTS WHO ARE FINANCIALLY CHALLENGED AND THE PROGRAMME HAS EVEN **SURPASSED** THE TARGET.

-- TAGDev Partner

Goal

220 scholarship recipients after 8 years

Success

443 recipients after only 4 years

TRANSPARENCY IN SCHOLARSHIP SELECTION AND ENDLESS **SUPPORT** PROVIDED

-- TAGDev Student

Distribution Of 443 MCF@RUFORUM Scholarship Recipients

CARP+ Project Students

Egerton University
MCF Scholarships
95

Nurturing Grants
59

Gulu University
MCF Scholarships
95

Nurturing Grants
43

University of Abomey Calavi, Benin
28

University of Gezira
14

University of Kordofan
14

Ndejje University
12

University of Khartoum
12

University of Nairobi
9

Bindura University
12

Peace University
8

University of Cape Coast
8

Makerere University
7

University of Namibia
6

Botswana University
5

University of Free State
5

GENDER DISPARITIES GREATEST AT THE UNDERGRADUATE LEVEL



Results may be shaped by gendered ratio in the application process

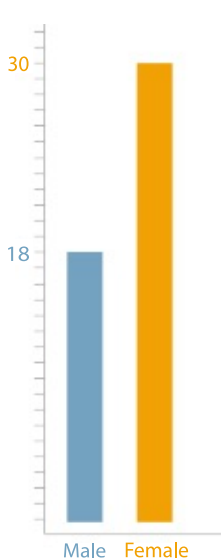


RUFORUM TAGDev proposal committed to, *"At the undergraduate level, 60% of students recruited will be female."*

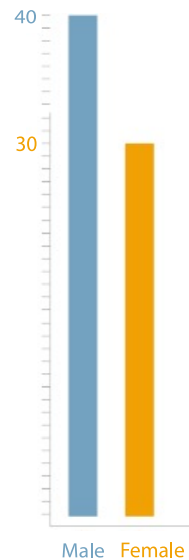


Opportunities exist to explore and address disparities

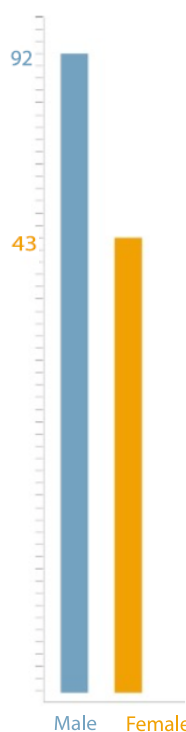
Mini-CARPS



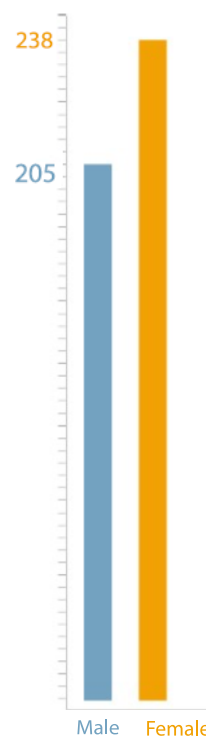
CARP+



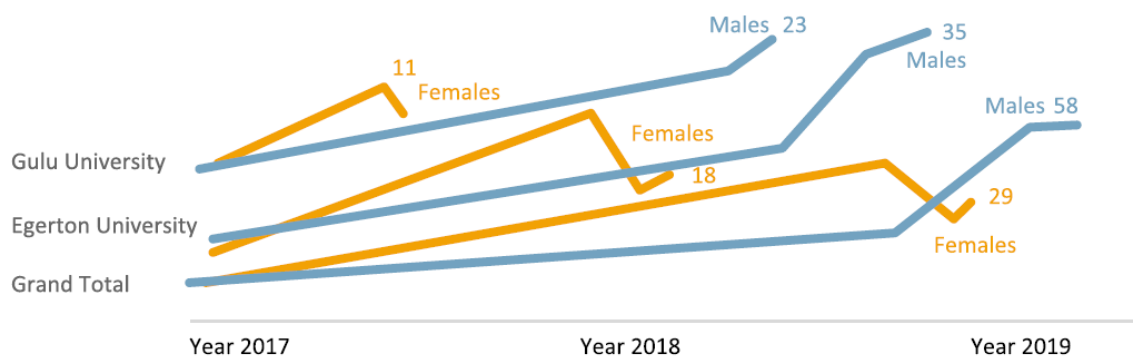
Nurturing Grants



TAGDev Scholarships Total



Nurturing Grants By University (Gulu and Egerton)



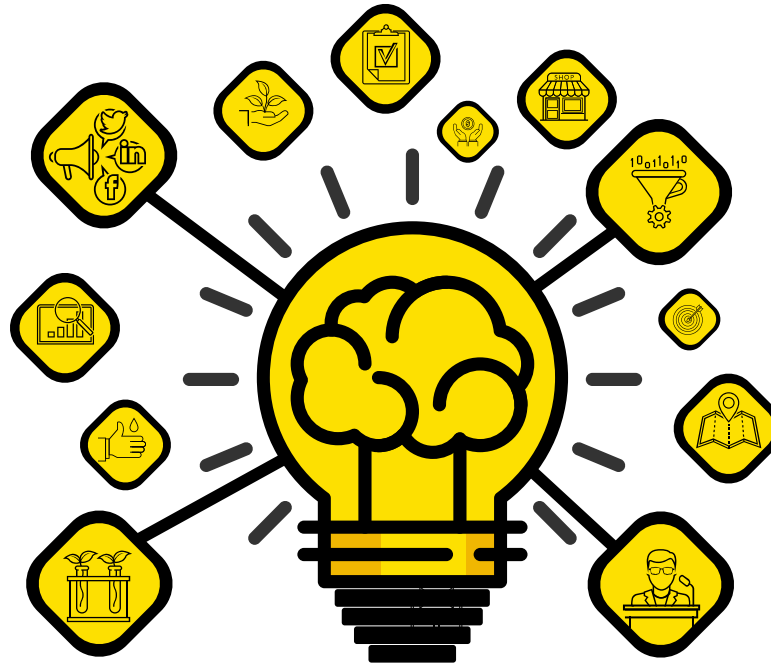
TAGDEV OUTCOMES

STUDENT OUTCOMES

Most Cited Change:
Students gaining skills
for the job market

Deepest Change:
Students financially
empowering
themselves e.g. self
employed

Deepest Change:
Students employing
others in their
businesses



Outcome mapping centres people and the change they experience, capturing changes in attitudes, cognition, behaviors, relationships, etc. to demonstrate the influence of the intervention.

Shown are the most cited or deeply impactful results harvested from TAGDev interviews and focus groups.

STAFF OUTCOMES

Most Cited Change:
Staff capacity for
experiential or
practical
teaching/training

Deepest Change: Staff
preparing and presenting
publication/policy briefs at
national and international
forums

Deepest Change:
Staff change in
attitude towards
entrepreneurship
and agribusiness

GENDER IN THE TAGDEV PROJECTS

AMONG FARMERS



Women

Mostly involved
in field activities



Men

Mostly attend
meetings and
training



THERE STILL NEEDS TO BE MORE AWARENESS OF USING A GENDER LENS
WHEN CARRYING OUT RESEARCH AND BEING SURE TO TEST, OR CONSIDER,
HOW INNOVATIONS ARE IMPACTING WOMEN DIFFERENTLY FROM MEN.

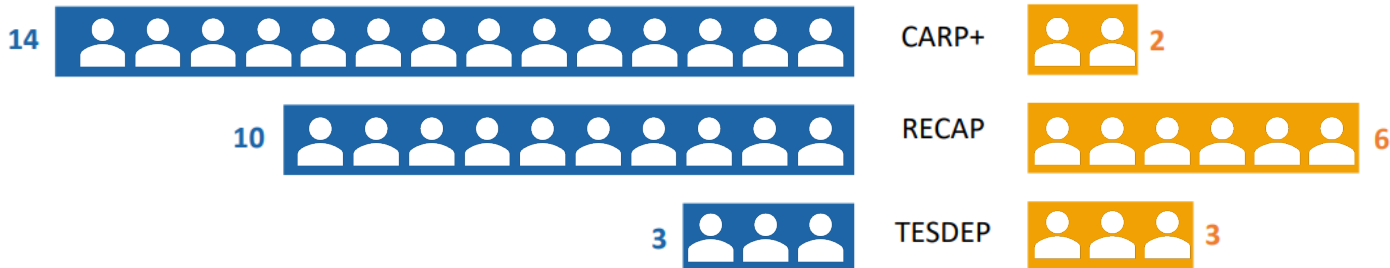
- Key Informant Interview 28 -



PROJECT LEADERSHIP IN TAGDEV PROJECTS

Males

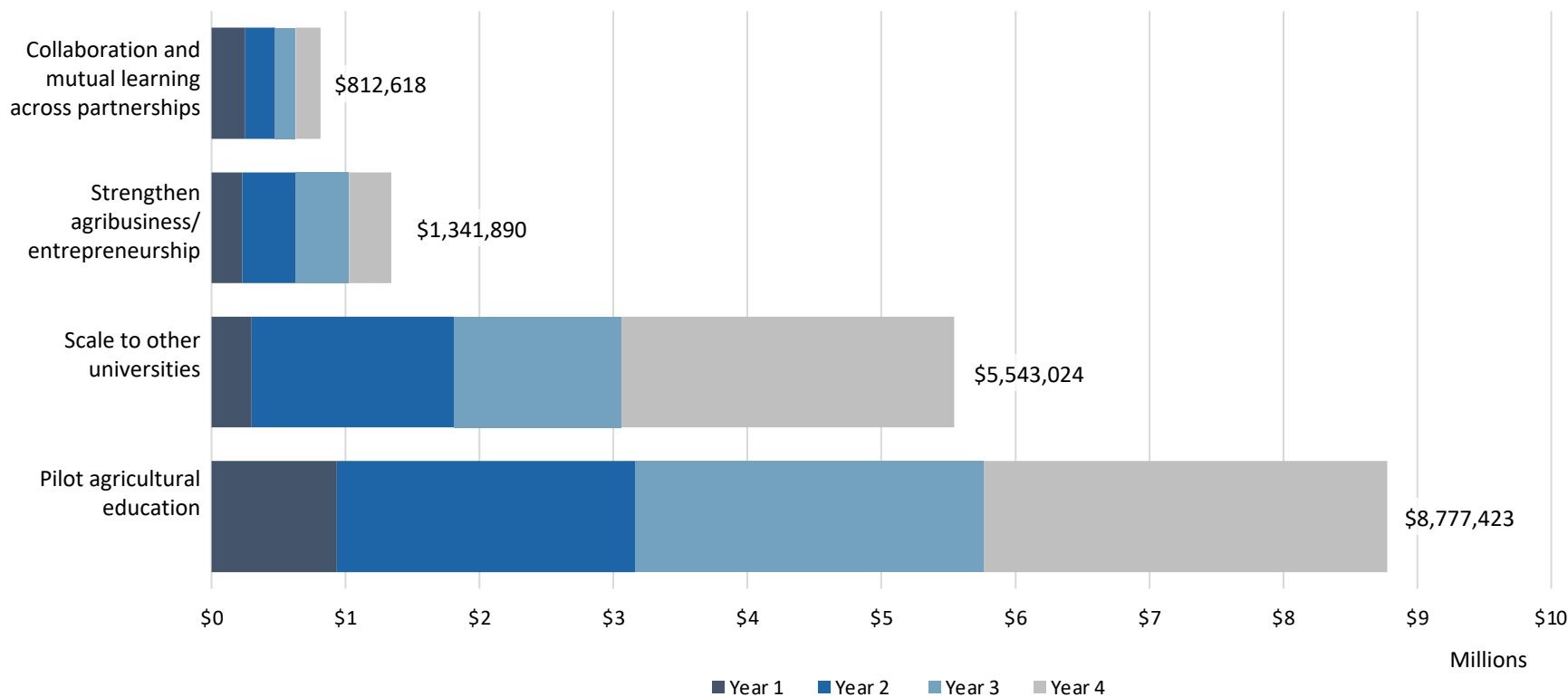
Females





COST OF PROGRAMME ACTIVITIES 2016-2020

TAGDev Programme Activity



INFORMATION AND COMMUNICATION TECHNOLOGIES

Microsite within the main
RUFORUM portal
<https://www.ruforum.org/MCF>

Microsite

RUFORUM Newsletters

Newsletters

<https://twitter.com/ruforumsec>
Hashtag #TAGDev
7,612 followers

Twitter



Website

Dedicated website at
<http://www.tagdev.org>
73,432 page views

Blog

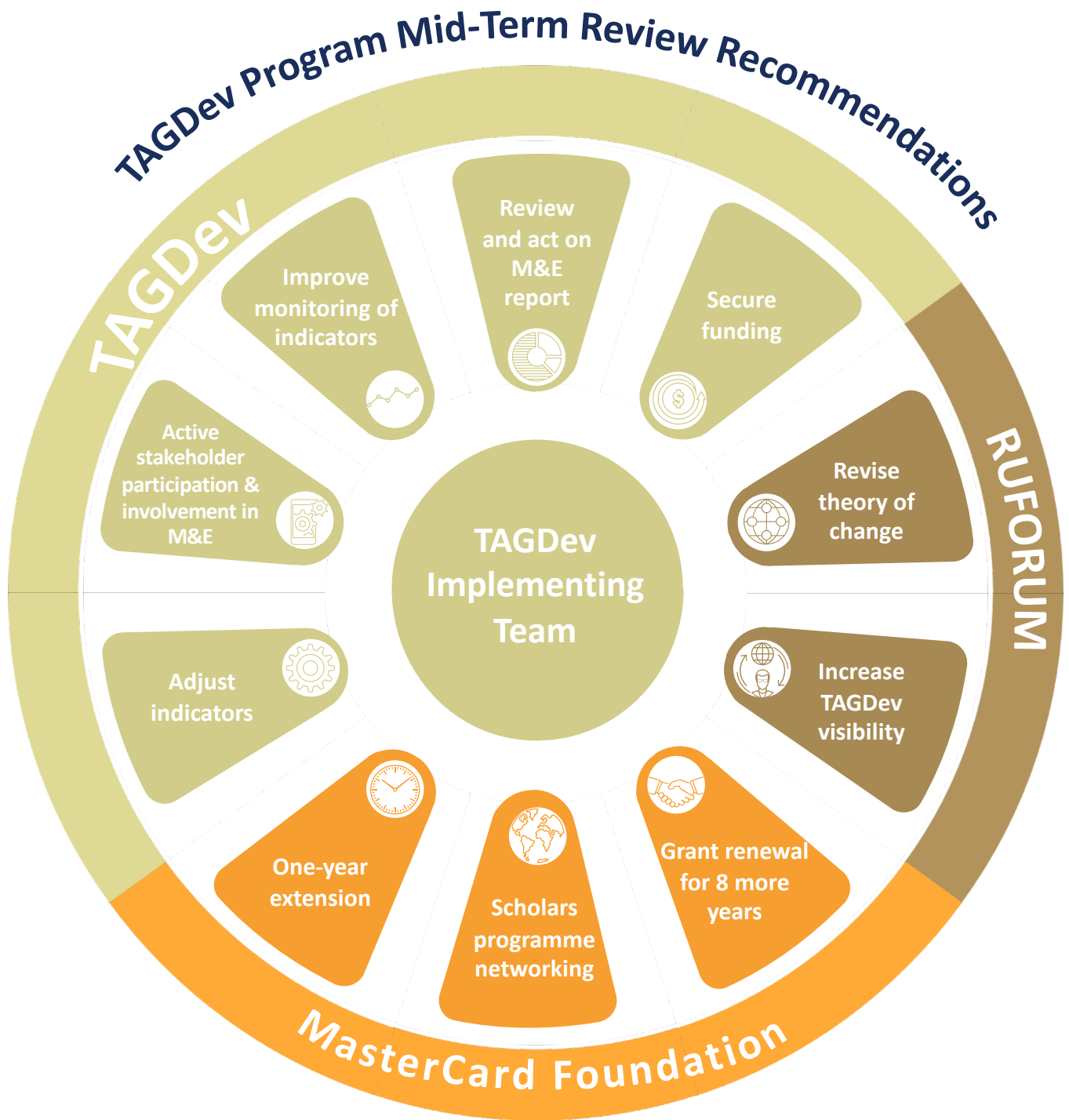
Dedicated blog for case stories
and engaging participants

Facebook

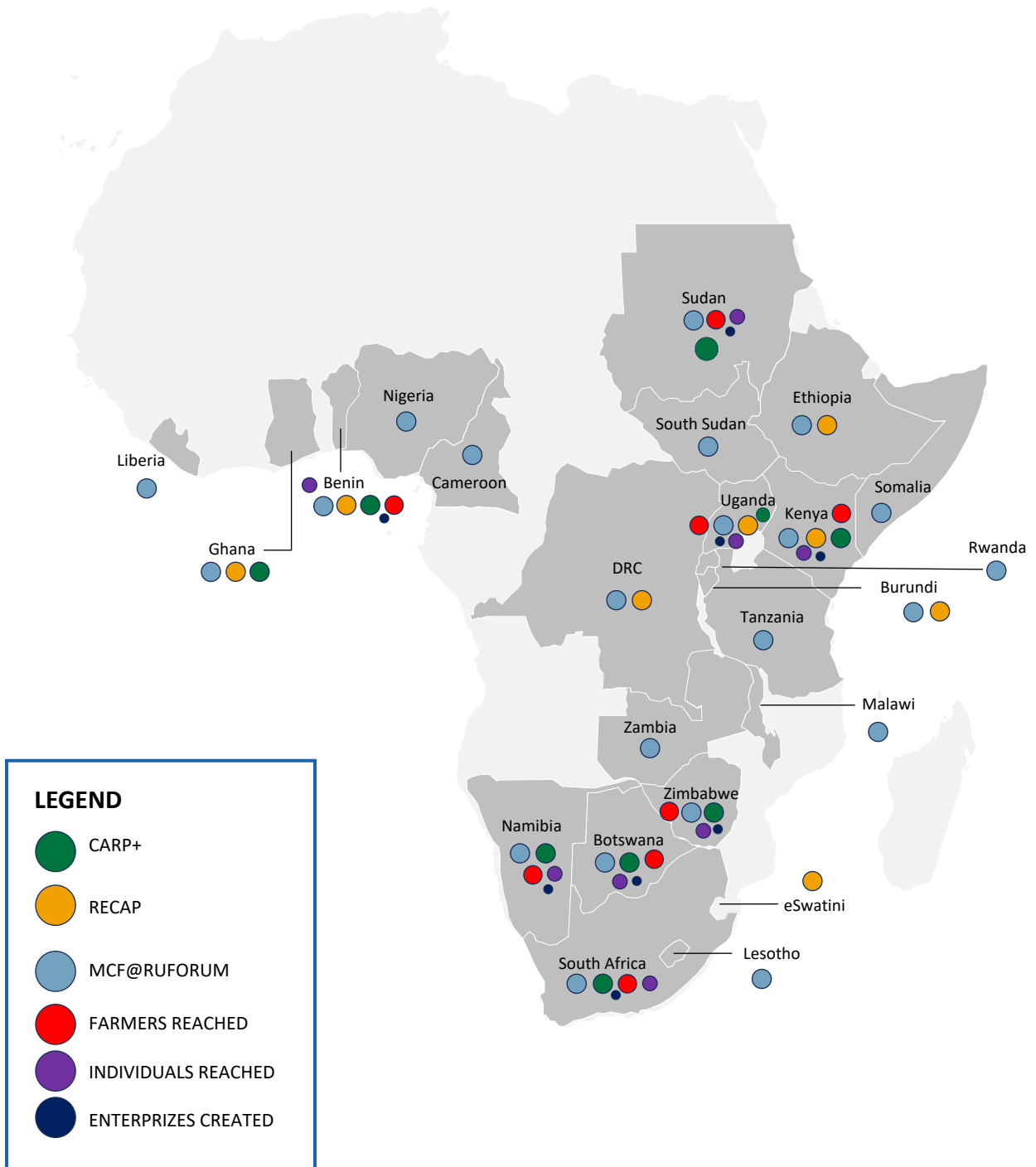
[http://www.facebook.com/
RUFORUMNetwork](http://www.facebook.com/RUFORUMNetwork)
21,986 likes

Youtube

Site for showcasing case
studies and stories in a
video format
47,671 video views



MAP OF TAGDEV PROJECTS



TAGDev Achievements in Numbers 2016-2020



TVET students trained - 1,046



Out of schoolers trained - 927



TVET Instructors trained - 135



**Number of Students
associated with
RECAPs - 703**

**Number of Enterprises
Created - 81**

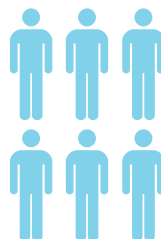
**Number of
Employees - 209**

**Number of Enterprise
Members - 273**

**Number of TAGDev
Workshops, Conferences,
Courses & Fora - 108**



**Total Female Fora
Participants - 3,043**



**Total Male Fora
Participants - 4,914**



**Number of participants at TAGDev Workshops,
conference etc - 8,292**

Number of Farmers reached - 47,974

Individuals Reached - 217,954

Number of courses remodeled/Revised -7

Number of new curricula created/designed -6

